

# Fin Lifter 1800



## A Truly Impressive Fin Lifting Machine

With an impressive 9m length body, this innovative glass lifting machine is perfect for handling long format glazing fins which have become a growing architectural trend.

This flexible lifter also has a fully adjustable frame to suit shorter pieces of glass, offering customers the choice of 3000mm (600kg), 6000mm (1200kg) or 9000mm (1800kg) configurations.

Glass mullion systems and glazing fin systems can be safely and quickly installed thanks to the Fin Lifter's powered hydraulic 90° tilt and 360° powered rotation.

Extra safety features include 2 independent vacuum circuits so glass is held securely in place during the unlikely event that one circuit fails. A pendant cable remote controlled is provided as standard.

### Technical Specifications

<b>Safe working load</b> (smooth, clean surface at 60% vacuum)	capacity:	1800kg	1200kg	600kg
<b>Number of suction cups</b>	cups:	24	16	8
<b>Suction cup</b>	description:	black rubber, not abrasion resistant.		
<b>Suction cup diameter</b>	diameter:	300mm		
<b>Suitable for lifting</b>	material properties:	gastight / non-porous		
	surface:	smooth		
	example:	long format fin glass		
<b>Length of lifter</b>	approx:	9000mm	6000mm	3000mm
<b>Weight of lifter</b>	approx:	580kg	492kg	372kg
<b>Depth of lifter</b>	depth:	330mm		
<b>Rotation</b>	rotation:	360° powered		
<b>Tilt</b>	tilt:	90° powered hydraulic		
<b>Vacuum system</b>	dual circuit:	dual circuit with reserve tank		
<b>Voltage</b>	pump:	12v DC from rechargeable battery		
	battery charger:	110v/240v 50/60Hz single phase factory selectable		
<b>Standard accessories</b>	standard	pendant (cable) remote control, extension arms		

### Key Features

- 1800kg capacity (24 pads, 9000mm length)
- 1200kg capacity (16 pads, 6000mm length)
- 600kg capacity (8 pads, 3000mm length)
- 360° continuous powered rotation
- 90° hydraulic powered tilt
- Dual circuit vacuum system with reserve tank, non-return valve and vacuum gauge for each circuit
- Pendant cable remote control as standard
- Audio-visual low vacuum warning
- Depth of lifter: 330mm



**1800kg**  
Safe Working Load



**Short Configuration**  
3000mm Length  
600kg capacity



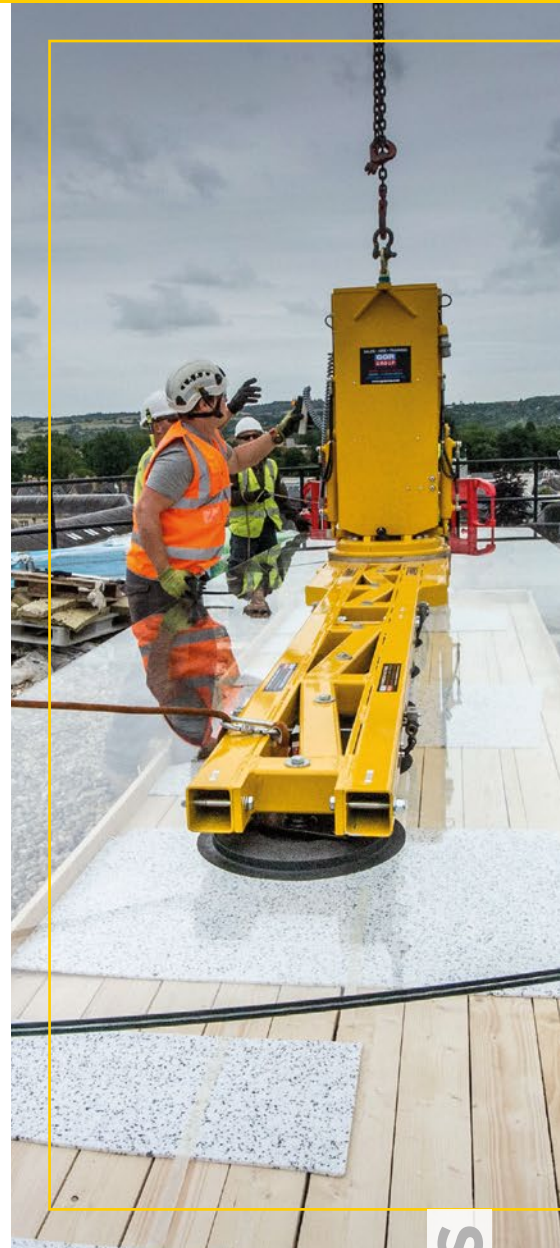
Cable remote control comes as standard



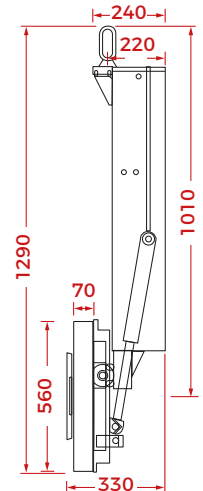
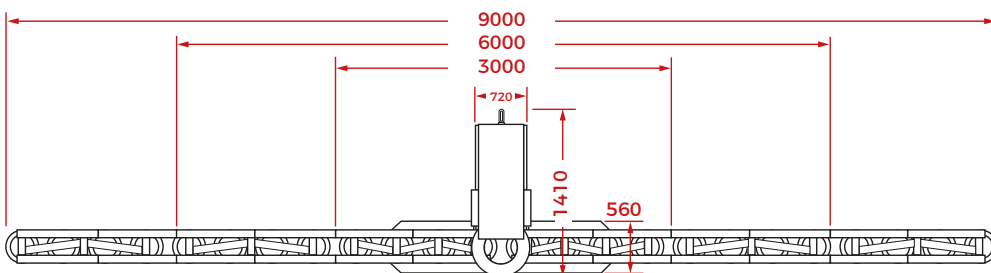
**Medium Configuration**  
6000mm Length  
1200kg capacity



**Long Configuration**  
9000mm Length  
1800kg capacity



## Technical Data (mm)



VACUUM LIFTERS